



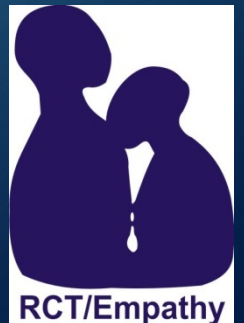
HOLISTIC REHABILITATION FOR VICTIMS OF TORTURE

KEY APPROACHES AND EXAMPLES OF THE RCT/EMPATHY

DR. MARIAM JISHKARIANI

WORKSHOP: TORTURE, HOLISTIC REHABILITATION AND THE ISTANBUL
PROTOCOL



APRIL 27, 2016, TBILISI





PROFESSIONAL OPERATIONAL (PROCEDURAL) MANUAL AND GUIDE FOR CLINICAL/PROFESSIONAL SUPERVISION

For all Professional (Health
and legal, Administrative)
staff of the RCT/EMPATHY



IDENTIFICATION OF MISSION

- **The RCT/EMPATHY is health and legal professional organization that aims: To provide multi-disciplinary rehabilitation for victims of torture and members of their families, for victims with Life Stress Experience, as well as to fight impunity and any violation of fundamental Human Rights.**

IDENTIFICATION OF TARGET GROUPS AND TARGET REGIONS

- The Target groups are torture victims according to the UN CAT Article 1 and 16, European Convention of Fundamental Human Rights and Freedoms: Article 3 and 13, and victims of the violation of international humanitarian law, including family members and second generation.

LOCATION:

- The RCT/EMPATHY's had office located in Tbilisi, Capital of Georgia in the central area of town. Location is easy to reach using the public transport; place presents building with separate entrance, with home environment and confidentiality. The centre is safe place for the clients and employees with the security system. Art Studio of the RCT/EMPATHY is located in separate, relevantly equipped place; As well as should be mentioned that project in military conflict zone in Abkhazia runs at the Out – patient Clinic located in Gali Region, Village Nabakevi.

LOCATION

- Safe place
- Easy accessible
- Services should be based on principles of independency, safety, closely and accessibility

POLICY DIRECTLY TOWARD TO VICTIMS OF TORTURE AND MEMBERS OF FAMILIES

**The State have to have special
policy and guidelines for the
rehabilitation of victims of torture
and members of their families**

AIM OF THE CENTRE

- to create a sound foundation for a non – governmental, independent services for survivors of torture and other stress – related victims
- through strengthening and developing links between comprehensive multi–disciplinary rehabilitation services,
- prevention and
- accountability with strong advocacy and communication strategies.

HOLISTIC APPROACH

- Covered Multi faced Rehabilitation activities , including: Medical, mental/psychological, Social and legal assistance
- Torture Prevention activities: Including the Forensic medical/Psychological evaluation and expertise according to IP, Special Training Programme for different target groups, activities focused on implementation of standards in Educational Programmes of academic institutions; PR campaigns and efforts on implementation of UN articles, as well as implementation of the WMA last resolution and NPM activities

THE RCT/EMPATHY OPERATES THROUGH ITS FOLLOWING DEPARTMENTS:



SERVICES INCLUDES:

- long Term rehabilitation that covers average 3 – 6 months medical and psycho – social assistance; as well as 3 months training and therapy in art – studio, long term assistance includes the legal services too.
- Also services covers Crisis Intervention and short term support that includes medical, psychological, social, forensic and legal interventions mainly in high risk settings such are collective living areas of IDPs and penal system as well. Services covers the Hot Line and on Call activities through communication tools.

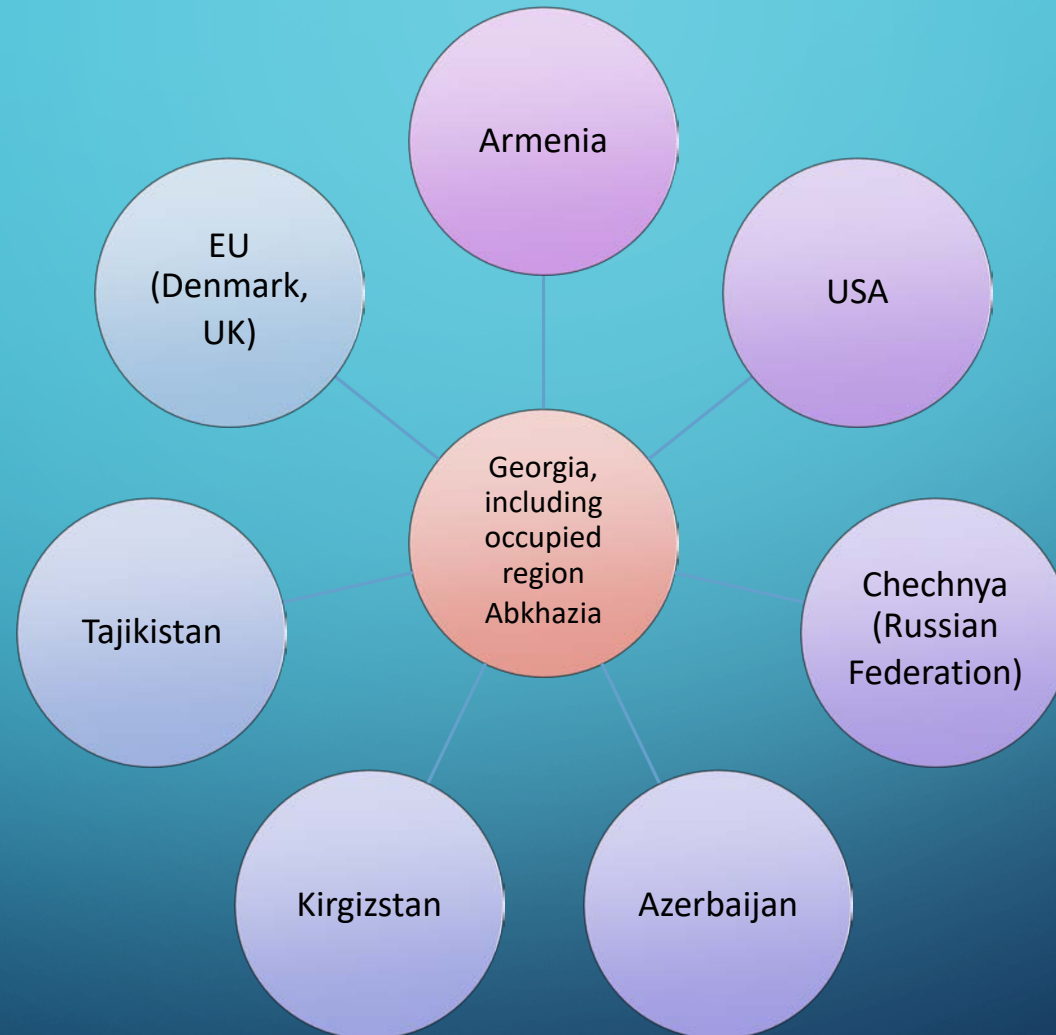
SERVICES

- Medical
- Psychiatric
- Psychotherapy (Individual, Group and Family)
- Art Therapy and art work
- Public – educational group and individual, family therapy
- Physiotherapy, Laser therapy and Acupuncture
- Counselling
- Community visits
- Referrals
- Financial assistance (support for travel and accommodation for outpatient type treatment for VT)
- Social assistance
- family – based treatment
- Psychological
- Legal Assistance and Client advocacy
- Centre is providing independent forensic expertise, medical and psychiatric/psychological, in accordance with Istanbul Protocol.
- “Hot Line” – for immediate response and crisis intervention.
- Training – educational and research programme

MEDICAL PROGRAMME

- **Referral Clinics – service providers:** The RCT/EMPATHY's referral medical program implements through service provider outpatient and in pertinent medical diagnostic Centres and Hospitals, as well as forensic evaluation provided by the sub-contractor independent forensic agency.
- **Free of charge pharmacology program** has been providing through the sub – contractor pharmacology agencies.

PARTNERSHIP



INTERNATIONAL STANDARDS



BASELINE LEGAL AND MEDICAL DOCUMENTATION FOR THE RCT/ERMPATHY AND ITS PROFESSIONAL STAFF:

- **The RCT/EMPATHY staff and consultants should aware and lead in their work using the following International and National legal and professional instruments and guidelines:**

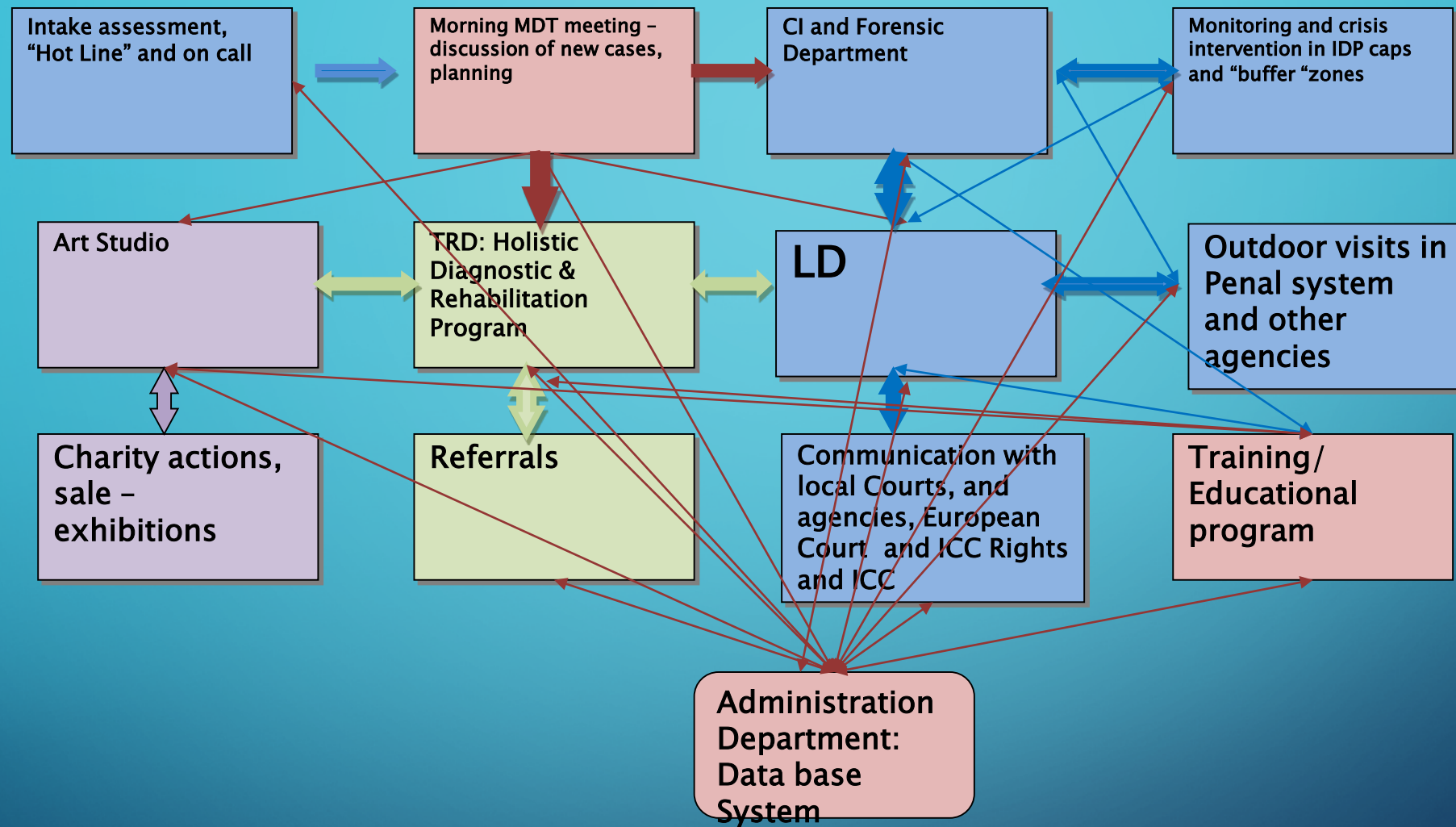
ABOVE REFERRED METHODOLOGY IS BASED ON MANDATORY AND RECOMMENDED INTERNATIONAL STANDARDS AND METHODOLOGY. NAMELY:

- UN Convention on Prevention of Torture and other Cruel, Inhuman or Degrading Treatment and Punishment (1997)
- Optional Protocol to the above mentioned Convention (2006)
- European Convention on Elimination of Torture and/or Degrading Treatment and Punishment (1987) (optional)
- Istanbul Protocol– Manual on the Effective Investigation and Documentation of Torture and Other Cruel, Inhuman or Degrading Treatment or Punishment (United Nations; New York and Geneva, 2001 – 2004).
- Principles and Case Law of European Court of Human Rights
- III General Report of the European Committee for Prevention of Torture on Healthcare in Prisons.
- UN Standard Minimal Rules for the Treatment of Prisoners (1955)
- UN Body of Principles for the Protection of All Persons under Any Form of Detention or Imprisonment (1989)
- European Prison Rules (2006)

- Recommendation N R (87) 3 (1987) of the Committee of Ministers of the Council of Europe
- Recommendation N (98) 7 of the Committee of Ministers of the Council of Europe to member countries on organizational and ethical aspects of medical services within prisons (Strasbourg, April 20 of 1998)
- Improvement of mental healthcare in prisons, joint statement, regional Department of WHO, (the Hague, the Netherlands, November 18–21 of 1998)
- UN Principles of Medical Ethics (1982)
- Tokyo Declaration of World Medical Association (1975), Hamburg Declaration (1997), Geneva Declaration (1948), Malta Declaration (1991, 2006), Helsinki Resolution (2003, 2007),
- International Instruments and Mechanism for the Fight against Torture
- – A Compilation of Legal Instruments and Standards on Torture (Last Updated July 4, 2007, IRCT)
- Health in Prisons, A WHO Guide to the Essentials in Prison Health
- Madrid Recommendations on Health protection in prisons as an essential part of public health (WHO, 2010)

NATIONAL STANDARDS AND REGULATIONS

- **Constitution**
- **Criminal procedural code**
- **Health care legal frameworks**
- **Criminal code etc**



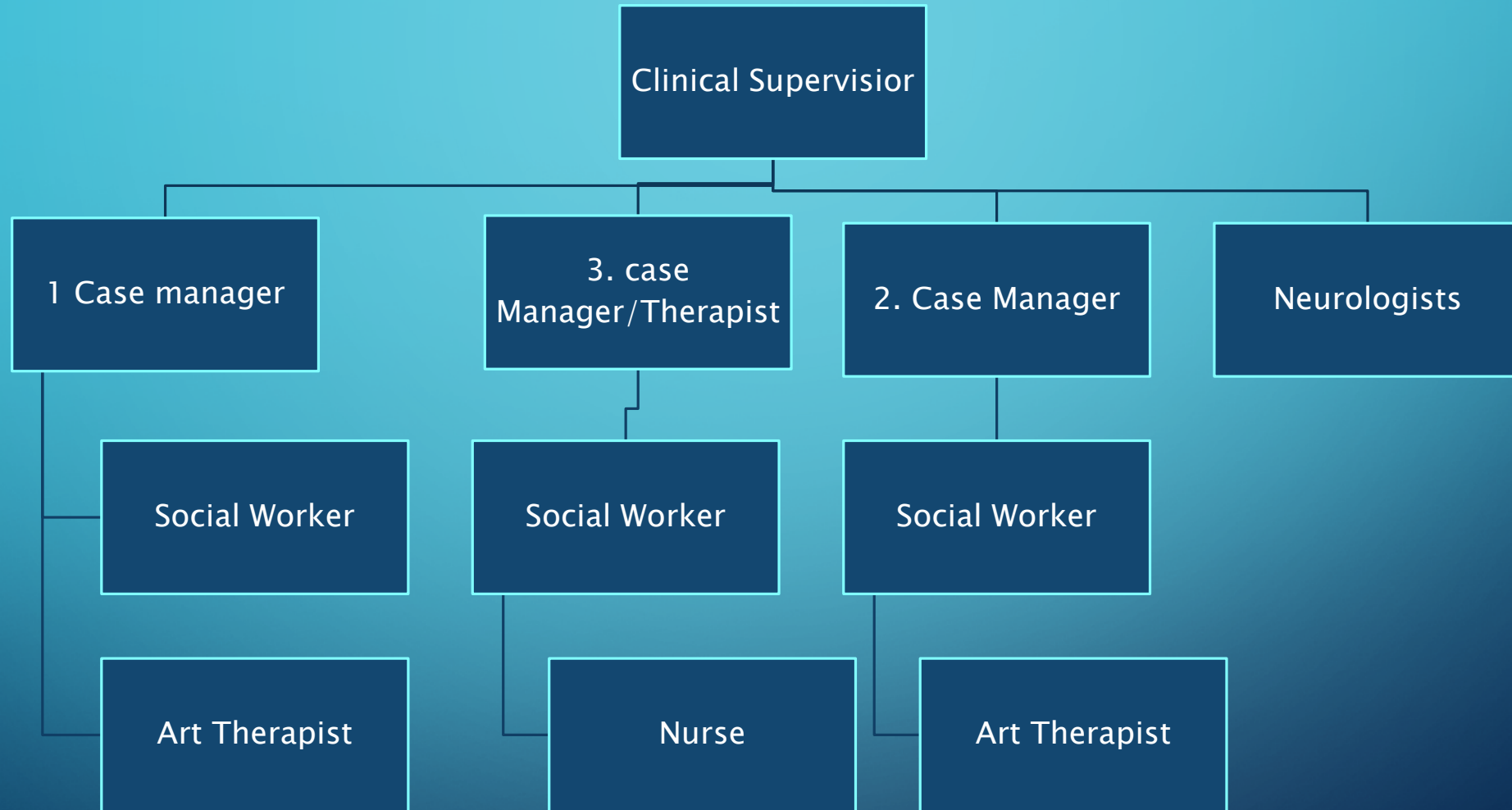
CLIENT'S ROAD MAP

- Who can apply
- How to apply
- Where and When
- Information Received regarding decision

STANDARD EVALUATION AND DOCUMENTATION

- Stage 1: Intake assessment
- Stage 2: MDT discussion and issued decision
- Stage 3: Transfer to the relevant unit for services
- Stage 4: Long term rehabilitation includes: minimum 3 doctor's assessment + clinical psychological assessment
- Stage 5: Elaboration of individual client centered plan of diagnostic and then MDT Rehabilitation
- Stage 6: Re – evaluation and assessment of effectiveness
- Stage 7: Follow up evaluation

CLINICAL STAFF SUPERVISION



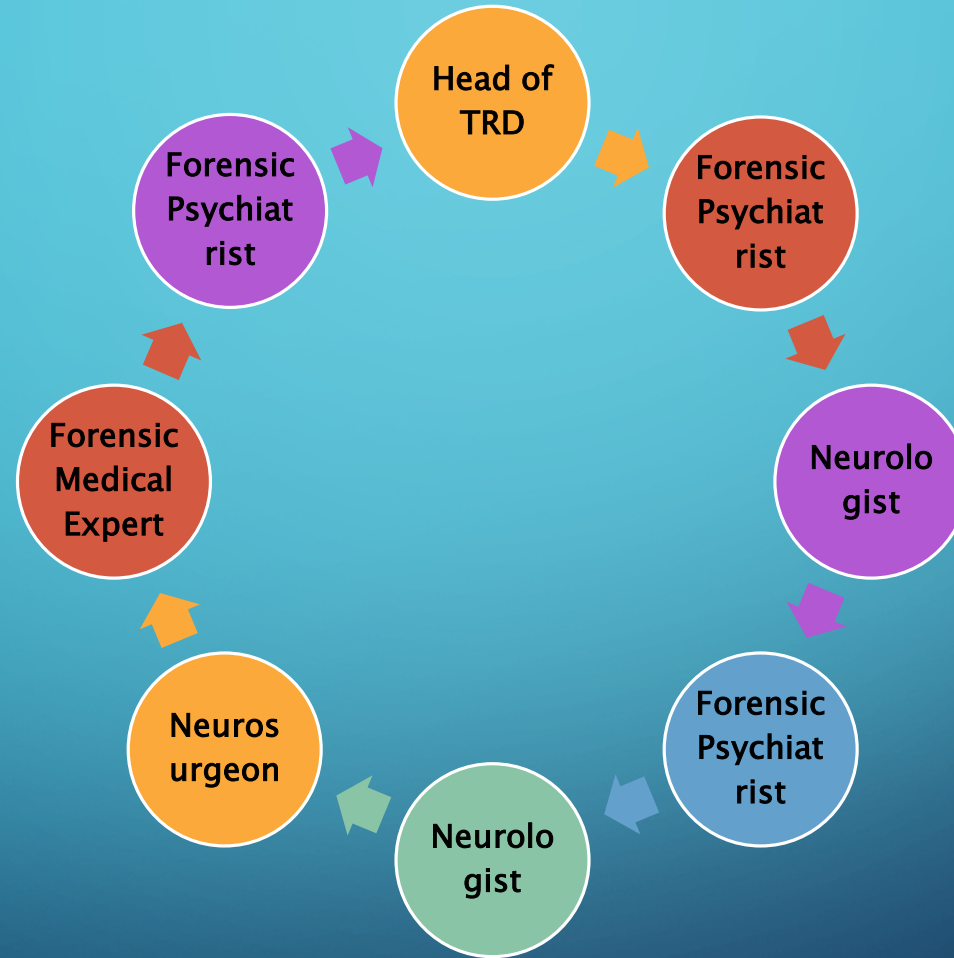
PSYCHOLOGICAL TEAM



FORENSIC UNIT SUPERVISION



PEER SUPERVISION



SUPPORT FOR CARE GIVERS PROGRAMME

- **Professional Development Programme**
- **Group Supervision Programme**
- **Other activities**

ART WORK SALE – EXHIBITION



The background is a blue gradient. In the corners, there are white line-art illustrations of circuit boards or neural network connections, with lines and small circles representing nodes.

●Thank you for attentio_n